

MIPS Improvement Activity + Earn ABIM MOC Credit

FROM PATHWAYS TO PROs

Translating the Latest Evidence
for Current and Emerging JAK
Inhibitors to Clinical Practice

With Stanley B. Cohen, MD (Chairman)
and Leonard H. Calabrese, DO

Tuesday, October 23, 2018

7:00 PM – 8:30 PM

Dinner will begin at 6:30 PM

Hyatt Regency McCormick Place
Regency Ballroom AB, 2nd floor
2233 S. Dr. Martin Luther King Jr. Dr.
Chicago, IL 60616

This is not an official program of the American College of Rheumatology.

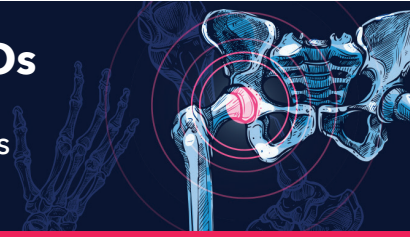
Provided by

CME
Outfitters 

#RheumCME

FROM PATHWAYS TO PROs

Translating the Latest Evidence for Current and Emerging JAK Inhibitors to Clinical Practice



AGENDA

Dinner begins at 6:30 PM

Symposium begins at 7:00 PM to 8:30 PM

FACULTY



Stanley B. Cohen, MD
Chairman

University of Texas Southwestern Medical School
Presbyterian Hospital
Metroplex Clinical Research Center
Dallas, TX



Leonard H. Calabrese, DO

Cleveland Clinic Lerner College of Medicine of Case Western Reserve University
Cleveland Clinic Foundation
Cleveland, OH

TARGET AUDIENCE

Rheumatologists, physicians, nurse practitioners, physician assistants, nurses, and pharmacists who treat patients with rheumatoid arthritis.

COMMERCIAL SUPPORT

Supported by an educational grant from Gilead Sciences, Inc.

REGISTRATION INFORMATION

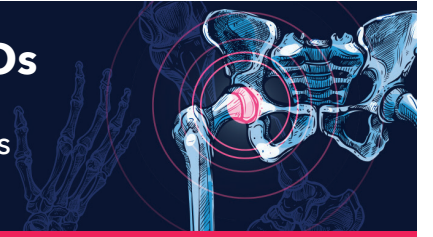
For more information on this symposium and to pre-register visit www.CMEOutfitters.com/RheumCME or scan the QR code on the right.



#RheumCME

FROM PATHWAYS TO PROs

Translating the Latest Evidence for Current and Emerging JAK Inhibitors to Clinical Practice



LEARNING OBJECTIVES


- Translate basic clinical immunology to current evidence for the pathophysiology and MOA for current and emerging JAK inhibitors.
- Evaluate clinical trial data for emerging small molecule/intracellular signaling targets in the management of patients with rheumatoid arthritis (RA).
- Assess the role of patient-reported outcomes (PROs) as measures for the value of new therapeutics for RA, in addition to safety and efficacy data.

The following learning objectives pertain only to those requesting CNE or CPE credit:

- Translate basic clinical immunology to current evidence for the pathophysiology and MOA for current and emerging JAK inhibitors.
- Evaluate clinical trial data for emerging small molecule/intracellular signaling targets in the management of patients with rheumatoid arthritis (RA).
- Assess the role of patient-reported outcomes (PROs) as measures for the value of new therapeutics for RA, in addition to safety and efficacy data.

ACCREDITATION STATEMENTS

CME Credit (Physicians): CME Outfitters, LLC, is accredited by the Accreditation Council for Continuing Medical Education (ACCME) to provide continuing medical education for physicians. CME Outfitters, LLC, designates this live activity for a maximum of 1.5 *AMA PRA Category 1 Credit(s)*[™]. Physicians should claim only the credit commensurate with the extent of their participation in the activity.

 **CPE Credit (Pharmacists):** CME Outfitters, LLC, is accredited by the Accreditation Council for Pharmacy Education as a provider of continuing pharmacy education. 1.5 contact hours (0.15 CEUs) Universal Activity Number: 0376-0000-18-020-L01-P Type: knowledge-based

CNE Credit (Nurses): Provider approved by the California Board of Registered Nursing, Provider Number CEP 15510, for 1.5 contact hours.

Note to Nurse Practitioners and Clinical Nurse Specialists: the content of this activity pertains to pharmacology. Earn up to 1.5 contact hours of pharmacotherapeutic contact hours.

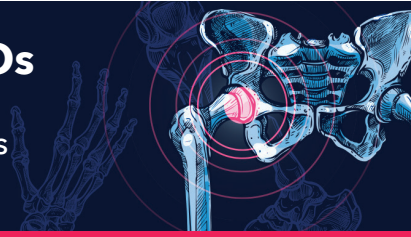
ABIM MOC Credit: Successful completion of this CME activity, which includes participation in the evaluation component, enables the participant to earn up to 1.5 MOC points in the American Board of Internal Medicine's (ABIM) Maintenance of Certification (MOC) program. Participants will earn MOC points equivalent to the amount of CME credits claimed for the activity. It is the CME activity provider's responsibility to submit participant completion information to ACCME for the purpose of granting ABIM MOC credit.

MIPS IMPROVEMENT ACTIVITY

This activity counts towards MIPS Improvement Activity requirements under the Medicare Access and CHIP Reauthorization Act of 2015 (MACRA). Clinicians should submit their improvement activities by attestation via the CMS Quality Payment Program website.

FROM PATHWAYS TO PROs

Translating the Latest Evidence for
Current and Emerging JAK Inhibitors
to Clinical Practice



Stanley B. Cohen, MD (Chairman)

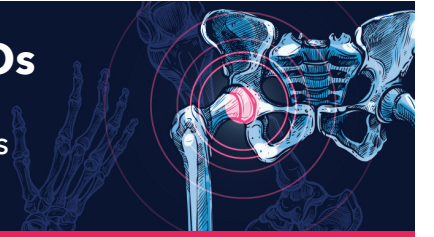
Clinical Professor, Department of Internal Medicine
University of Texas Southwestern Medical School
Co-Director, Division of Rheumatology
Presbyterian Hospital, Dallas
Co-Medical Director
Metroplex Clinical Research Center
Dallas, TX
Past President of the American College of Rheumatology
Atlanta, GA

BIOGRAPHY

Dr. Stanley Cohen is a board-certified rheumatologist and internist who joined Rheumatology Associates in 1975. Dr. Cohen is a Clinical Professor in the Department of Internal Medicine at UT Southwestern Medical Center and Co-Director of the Division of Rheumatology at Presbyterian Hospital, Dallas. He also is Co-Medical Director of Metroplex Clinical Research Center. He is a past president of the American College of Rheumatology and was honored in 2016 with the designation of Master by the American College of Rheumatology. Dr. Cohen completed a degree in biology from the University of Virginia and received his Doctor of Medicine with honors, from the University of Alabama School of Medicine in Birmingham. He completed an internship and residency in Internal Medicine at Parkland Memorial Hospital, Dallas, Texas, and a fellowship in Rheumatology at UT Southwestern/St. Paul University Hospital.

FROM PATHWAYS TO PROs

Translating the Latest Evidence for
Current and Emerging JAK Inhibitors
to Clinical Practice



Leonard H. Calabrese, DO

Professor of Medicine
Vice Chair, Department of Rheumatic & Immunologic
Disease
Cleveland Clinic Lerner College of Medicine
of Case Western Reserve University
R.J. Fasnmyer Chair of Clinical Immunology
Cleveland Clinic Foundation
Cleveland, OH

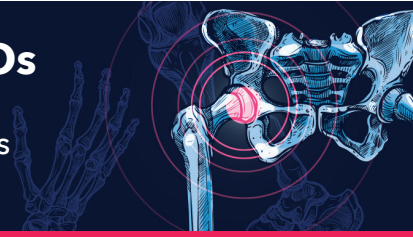
BIOGRAPHY

Dr. Calabrese is a graduate of the Kansas City University of Medicine and Biosciences. He performed his internal medicine training at the Cleveland Clinic Foundation followed by fellowship in rheumatic and immunologic disease. He has been on staff in that department at the Cleveland Clinic Foundation since 1980.

Dr. Calabrese has lectured nationally and internationally on the subjects of clinical immunology, rheumatology and virology and is the author of over 400 published peer reviewed articles, book chapters and reviews.

FROM PATHWAYS TO PROs

Translating the Latest Evidence for Current and Emerging JAK Inhibitors to Clinical Practice



DISCLOSURE DECLARATION

It is the policy of CME Outfitters, LLC, to ensure independence, balance, objectivity, and scientific rigor and integrity in all of their CE activities. Faculty must disclose to the participants any relationships with commercial companies whose products or devices may be mentioned in faculty presentations, or with the commercial supporter of this CE activity. CME Outfitters, LLC, has evaluated, identified, and attempted to resolve any potential conflicts of interest through a rigorous content validation procedure, use of evidence-based data/research, and a multidisciplinary peer review process. The following information is for participant information only. It is not assumed that these relationships will have a negative impact on the presentations.

Dr. Cohen reports that he is a clinical investigator and/or research consultant for AbbVie Inc.; AstraZeneca; Biogen Idec Inc.; Bristol-Myers Squibb Company; Genentech, Inc.; Janssen Pharmaceuticals, Inc.; Eli Lilly and Company; Novartis Pharmaceuticals Corporation; Pfizer Inc.; Merck & Co., Inc.; F. Hoffmann-La Roche Ltd.

Dr. Calabrese reports that he is a consultant for AbbVie Inc.; Centocor Biopharmaceutical; Crescendo Bioscience, Inc.; GlaxoSmithKline; Horizon Pharma; Janssen Pharmaceuticals, Inc.; Pfizer Inc.; Regeneron Pharmaceuticals, Inc.; UCB, Inc.

Jeffrey Helfand, DO, MS (peer reviewer) has no disclosures to report.

Mae Ochoa, RPh (peer reviewer) has no disclosures to report.

Kate Nelson, PHD (planning committee) has no disclosures to report.

Sharon Tordoff (planning committee) has no disclosures to report.

Jan Perez (planning committee) has no disclosures to report.

Disclosures were obtained from the CME Outfitters, LLC staff:
No disclosures to report.

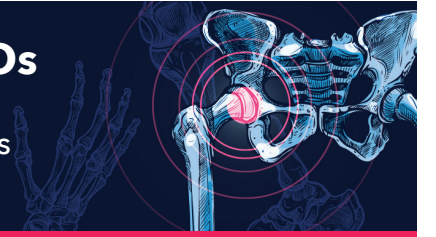
Faculty of this CE activity may include discussions of products or devices that are not currently labeled for use by the FDA. The faculty have been informed of their responsibility to disclose to the audience if they will be discussing off-label or investigational uses (any uses not approved by the FDA) of products or devices.

Thank you for joining us today

This symposium will be available as a web replay beginning **December 7, 2018**, please check www.CMEOutfitters.com for more information on that date.

FROM PATHWAYS TO PROs

Translating the Latest Evidence for Current and Emerging JAK Inhibitors to Clinical Practice



INSTRUCTIONS FOR INTERACTIVE TECHNOLOGY

If you would like to use your tablet or mobile device to answer polling questions, view the onsite presentations, and submit questions to the faculty, please follow the instructions below:

1. Get Connected

- Please connect to the CME Outfitters network with your mobile device or laptop. This network does not have a password.
** Please note that this network is a local network and does NOT mean you're connected to the internet.*
- Once you have joined the network, go to **arraylearn.com**.
- You are now connected to the symposium. All content and polling questions can be viewed on your device as long as you are connected to the above listed network.

2. Ask a Question to the Faculty

- Please click on **"Ask a Question"** and type your question. Please include the faculty member's name if the question is specifically for them. Your question will be sent to the faculty for the question and answer portion of the session.

3. View and Take Notes on Presentation Slides

- Please click on the **"Take a Slide Note"** button. If you did not enter your email address when you joined the meeting, you will be required to do so for note taking. When the meeting is complete, all your notes will be emailed to you within 5 business days.

Obtaining Credit

In order to receive credit, please complete the demographics survey upon login and the evaluation during Q&A on your mobile device. You will receive an email with your certificate after the event.

Downloadable Resources

Downloadable resources will be available at www.cmeoutfitters.com/RheumCMEresources

