



# CMEO Snack 1

## Why New Treatments are Needed for the Management of Psoriasis

*Supported through an educational grant from Bristol Myers Squibb*





April W. Armstrong, MD, MPH  
Professor of Dermatology  
Associate Dean for Clinical Research  
Director of Clinical Research Support, Southern California Clinical and  
Translational Science Institute (SC CTSI)  
Vice Chair, Director of Clinical Trials and Outcomes Research  
Director, Psoriasis Program, Department of Dermatology  
Keck School of Medicine, University of Southern California  
Los Angeles, CA



Melinda Gooderham, MSc, MD, FRCPC  
Medical Director  
SKiN Centre for Dermatology  
Assistant Professor  
Department of Medicine, Queen's University  
Consultant Physician  
Peterborough Regional Health Centre  
Ontario, Canada

# Today's Activity Is Eligible for ABIM MOC Credit and as a CME for MIPS Improvement Activity

Complete your post-test and evaluation at the conclusion of the activity



Be sure to fill in your **ABIM ID number** and **DOB** (MM/DD) on the evaluation so we can submit your credit to ABIM



Over the next 90 days, actively work to incorporate improvements in your clinical practice from this presentation

- Complete the follow-up survey from CME Outfitters in approximately 3 months
- CME Outfitters will send you confirmation of your participation to submit to CMS attesting to your completion of a CME for MIPS Improvement Activity

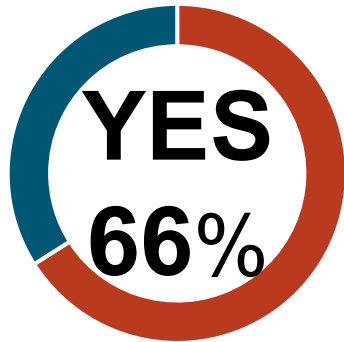


# Learning Objective

Address the burden of disease and unmet treatment needs in the management of psoriasis (PsO).

# The Burden of Disease in Patients With PsO is Well Established

Does your skin condition keep you from engaging in certain social activities?  
(n = 632)



51.7% of respondents feel they have faced discrimination in the workplace, school or socially because of their visible skin lesions

56.3% of respondents stated their PsO affects activities related to swimming

48% stated their PsO affects activities related to exercise

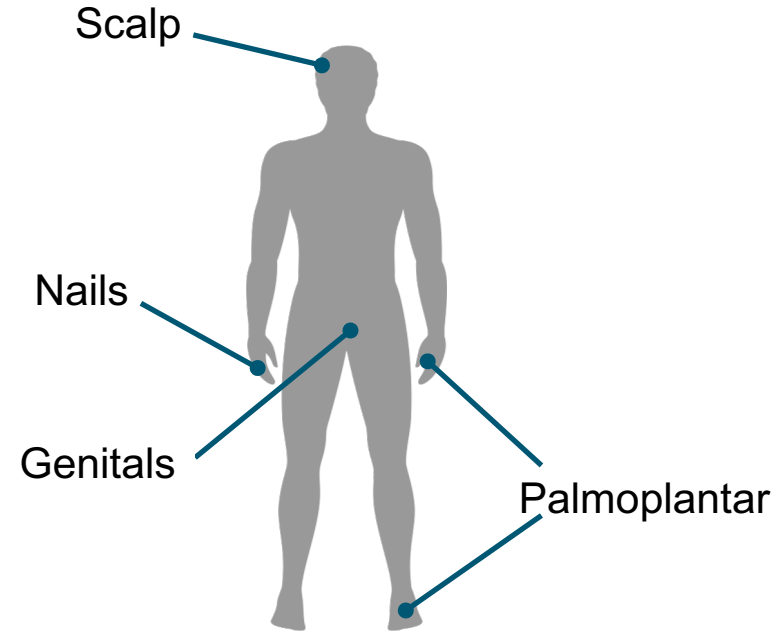
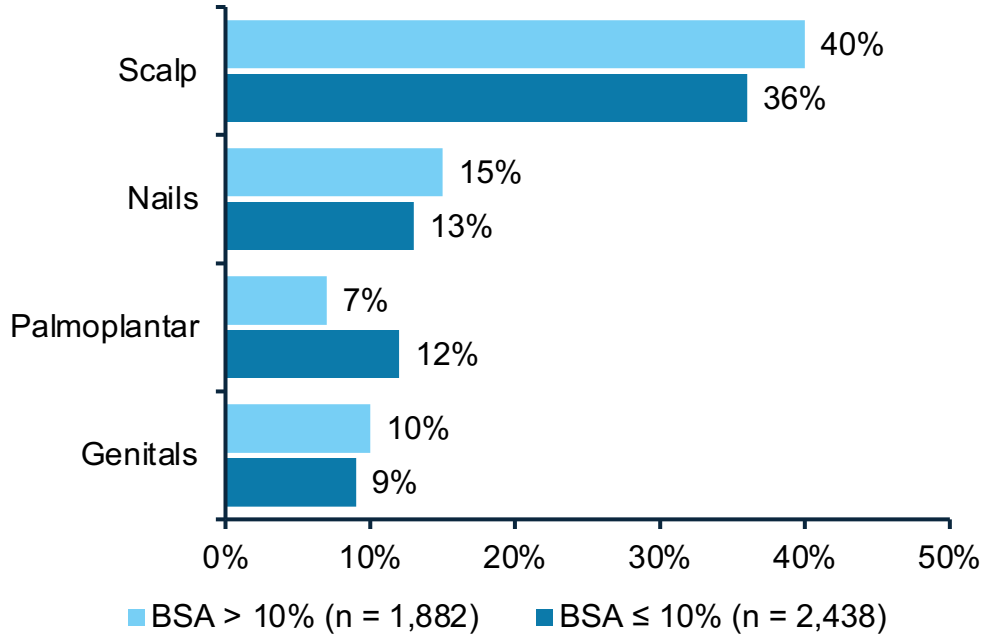
3.3% stated their PsO affects activities related to dating, romance, and sexual behaviors



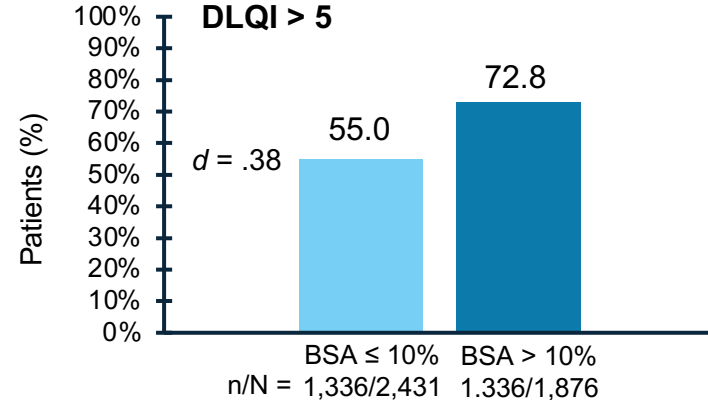
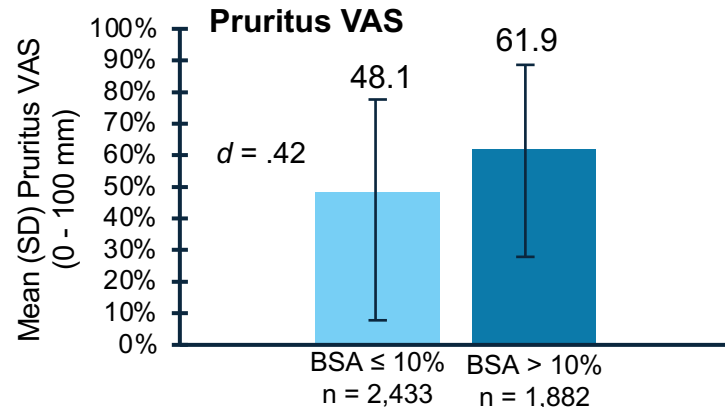
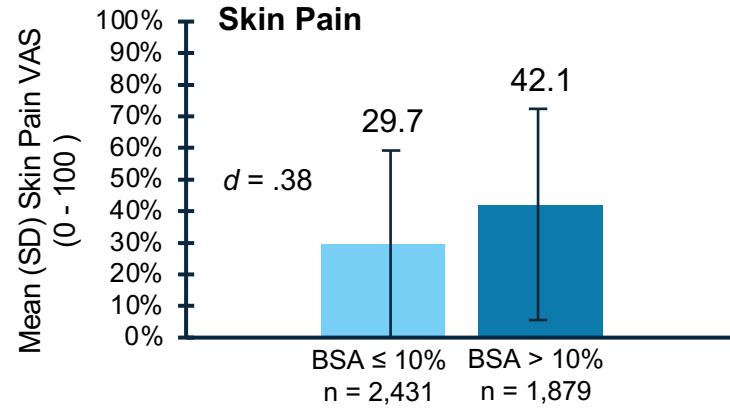
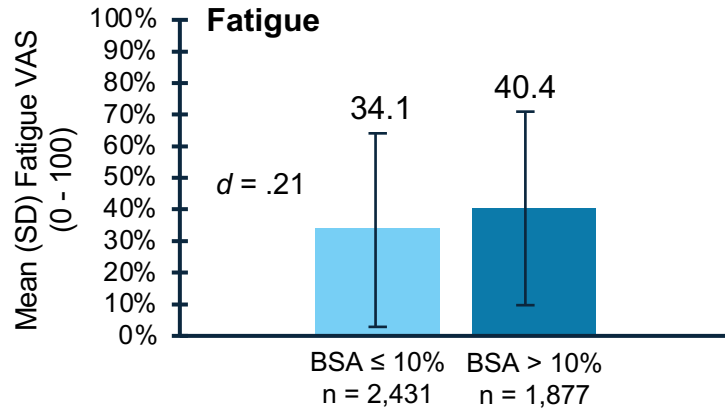
# Is Burden of Disease in Patients with PsO Dependent on Severity of Disease?

Results from the Corrona  
Psoriasis Registry

# Psoriasis Involvement in Special Areas Comparable in the Mild-to-Moderate vs. Severe BSA Groups



# Scores Were Higher With Severe PsO vs. Mild-to-Moderate, but Both Groups Had Substantial Disease Burden



$d$  = potentially meaningful difference; DLQI = Dermatology Life Quality Index; mm = millimeters; n/N = number of patients ; SD = standard deviation; VAS = visual analog scale  
Strober B, et al. AAD Virtual Meeting Experience (VMX); 2021. Poster ID: 26698.



# Factors Associated with Patient Reported Remission in PsO



1,494

Patients with PsO

40.4%

Reported a BSA  $\leq$  3%

51.8%

Use a biologic to treat PsO in the last 12 months

- Severity assessed with Patient Report of Extent of PsO Involvement (PREPI)
- Individuals reporting BSA  $\leq$  3% asked if they felt they were in remission

# Patients Whose PsO in Remission

53.9% reported no effect on QoL

- 33.3% small effect
- 10% large effect
- 3.3% very large effect
- .5% extremely large effect

60 months

- Mean duration of remission

79.5%

- Reported current treatment of PsO

65.2%

- Used a biologic in last 12 months to treat PsO

# Factors Related to Remission

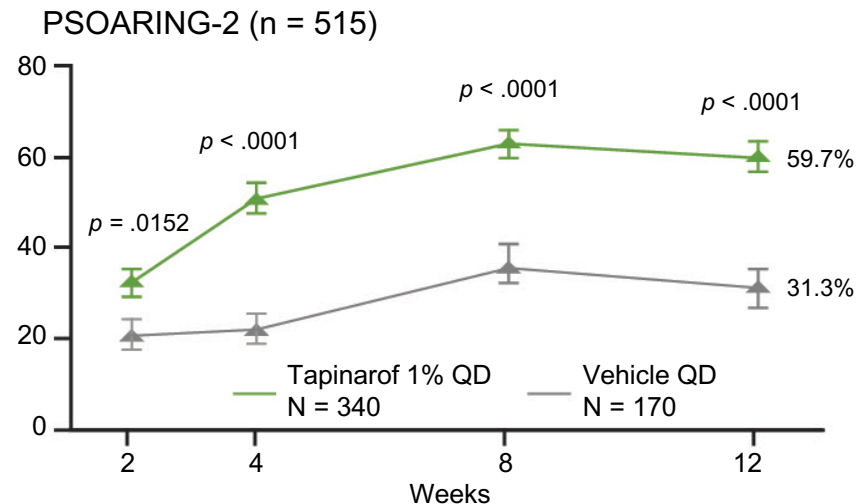
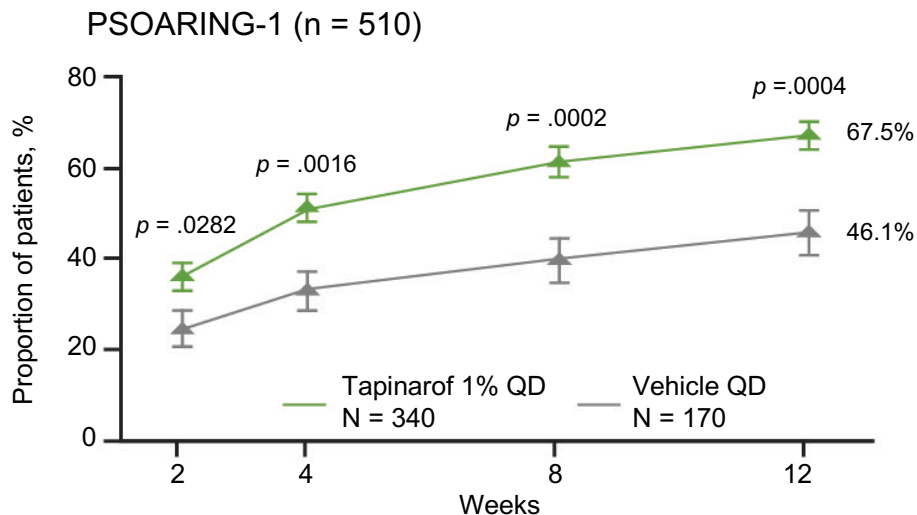
- Lower DLQI score ( $p < .001$ )
- Lower Global PsO-related QoL ( $p < .001$ )
- Lower BSA ( $p < .01$ )
- Female sex
- Biologic use ( $p < .001$ )
- Age, race, BMI were *not* related to remission



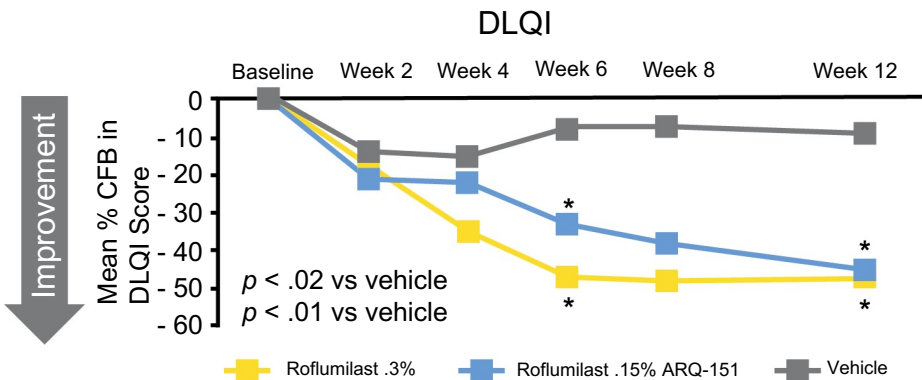
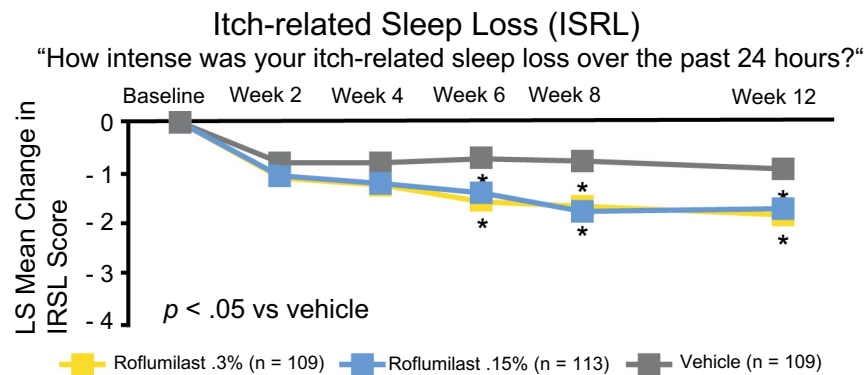
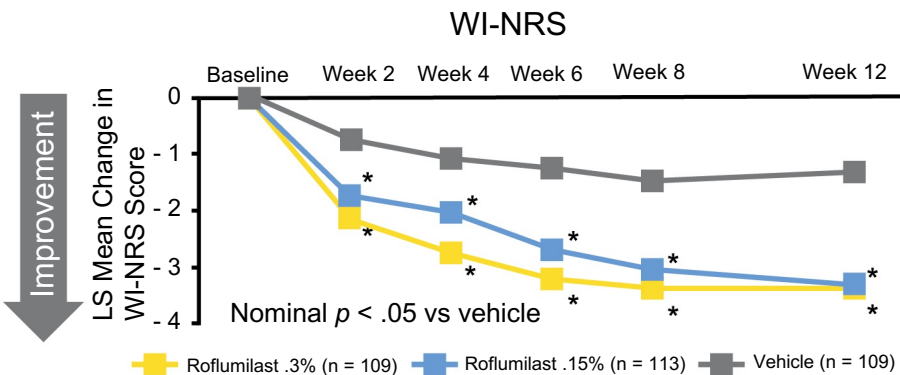
What About the Patients With  
Moderate Disease Not Being  
Treated Beyond Topical Steroids?

# Phase III PSOARING 1 and 2: Tapinarof 1% Cream Once Daily for PsO

Gold Standard of at Least a 4-point Improvement in PP-NRS Score from Baseline to Week 12



# Phase 2b Study: Significant Improvements in Itch, Itch-Related Sleep Loss, and QoL in Patients Treated with Roflumilast Cream



Roflumilast cream is not FDA-approved for the treatment of PsO  
 CFB = change from baseline; DLQI = Dermatology Life Quality Index; NRS = numeric rating scale; WI = worse itch  
 Gold LS, et al. AAD Virtual Meeting Experience (VMX); 2021. Poster ID: 27874.

# SMART Goals

Specific, Measurable, Attainable, Relevant, Timely

- Appreciate the burden of PsO on patient QoL and negative impact on participation in social and professional activities
- Recognize that disease severity may not always drive disease burden
- Evaluate factors that are associated with patient perspectives on disease burden

CMEO   
**Snack**

**2**

Refining Treatment  
Targets for the  
Management of Psoriasis

CMEO   
**Snack**

**3**

Forecasting a Bright  
and Clear Tomorrow for  
Psoriasis Treatment

[www.CMEOutfitters.com/dermatology-hub](http://www.CMEOutfitters.com/dermatology-hub)